

OSB14

Swimming Starting Block

OVERVIEW

The OSB14 is a part of the new generation of starting block for swimming.

It replaces the OSB9 and includes an inclined foot rest, which allows a significant improvement of thrust when the swimmer starts. This proven technology has been adapted to the new starting block.

The OSB14 is designed in fiberglass to ensure the platform robustness while optimizing its weight (28kg).

The platform is covered with an anti-skid surface providing comfort and safety to the swimmer.

With a smaller base (200x320mm) than the OSB11, this starting block can be installed in pools with minimal floor space. The mounting system is similar as for the OSB9, allowing an easier replacement of these units, no longer produced to this day, by the new starting block OSB14.

A door at the back of the block allows easy access to the interior to connect the cabling.



The OSB14 is the ideal solution for pools with minimal floor space.

Top features

- Adjustable footrest
- Small footprint
- FINA compliance
- Anti-skid surface

Available versions

Two versions of the OSB14 are available:

- Standard version
- RBD-version (Relay Break Detection)

Both versions have the same base and top, providing an affordable and evolutive solution : a basic system can be upgraded later to a RBD system.

The footrest can be freely adjusted in length, or disassembled with standard tools.

In a fixed cable installation, the various items of the timing system are connected into a lane deck plate which is installed under the center of each block. This offers physical protection for the cables, connections and speaker.

An additional start deck plate can be located next to the position of the acoustic start device.

Specifications

Article number	: 3454.707 (with RBD) 3454.708 (simple)
Overall size	: 739 x 518 mm (length x width)
Top plate size	: 740 x 518 mm (length x width)
Height	: max. 655 mm
Material	: fiberglass
Weight	: 28 kg
RBD contacts	: N.O. , max. 100 mA / 12 V
RBD connection	: cable with 2x banana plugs
Certifications	: RoHs, FINA approved

Available sets

OSB14	with RBD	simple
Set of 6	3454.926	3454.936
Set of 8	3454.928	3454.938
Set of 10	3454.930	3454.940

Options

Internal loudspeakers:

3399.600: for fixed wiring, with 2x banana plugs
3399.610: for mobile wiring, with Tu4pM connector



Deck plate sets:

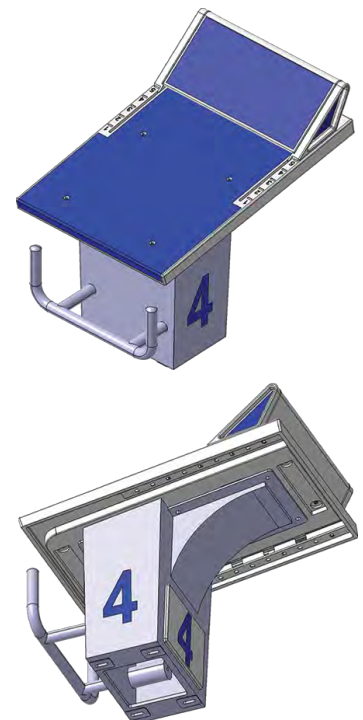
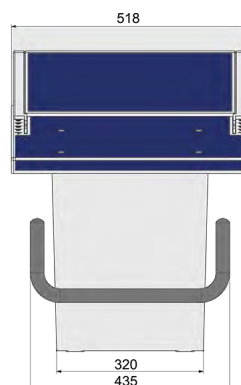
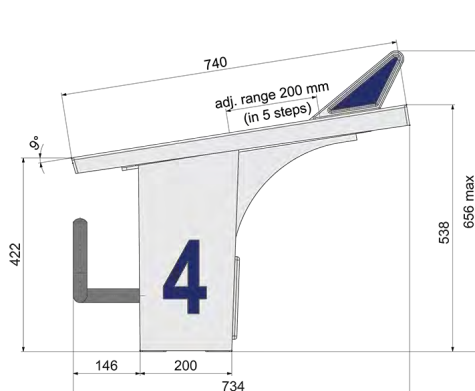
3274.926: Deck plate set for 6 lanes swimming pool
3274.928: Deck plate set for 8 lanes swimming pool
3274.930: Deck plate set for 10 lanes swimming pool
3274.635: Start deck plate set (for the acoustic start device)



Dynamomètre :

9051.1015: Dynamometer (for calibration of the RBD)

Dimensions (mm)



All the information contained in this document can be modified without warning. Swiss Timing LTD cannot be made responsible for any errors contained in this document or for any damage secondary or consequent (including the loss of profits) arising from the supplying, performance or use of this product, whether it be on the base of a guarantee, a contract or any other legal ground.

OSB14_3454.707/3454.708

SWISS TIMING LTD

A COMPANY OF THE SWATCH GROUP

P.O. Box 138, rue de l'Envers 1
CH-2606 Corgémont
Switzerland

Phone +41 32 488 36 11
www.swisstiming.com
info@swisstiming.com